

**AVEL**<sup>®</sup>

**WATERPROOF  
IN-WALL TVS**



**Innovative solutions  
for home and business**

**2022**





# AVEL BUILT-IN TVS

The first Waterproof TV series was presented by AVEL in 2012 and immediately attracted attention of customers by its high quality and original design. In the following years, our company has repeatedly updated built-in TVs in accordance with modern trends and technology development, also considering the opinion of customers. Now the range includes TVs of standard sizes and exclusive models for the implementation of bespoke projects.

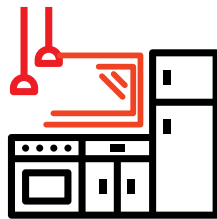
Production is carried out on our own assembly line in China, which allows us to fully control all the stages of creating TVs.

## APPLICATIONS

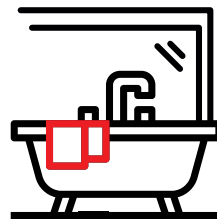
---



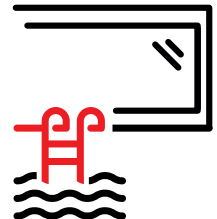
Living rooms



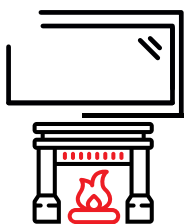
Kitchens



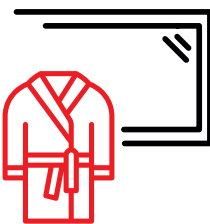
Bathrooms



Saunas and  
pools



Fireplace TV



Hotels



Beauty salons



Business  
solutions



# IMPORTANT ELEMENT OF ANY INTERIOR

AVEL built-in TVs are protected from moisture; this is confirmed by a special certificate. Thus, our TVs can be used not only in bedroom or living room, but also in bathroom, kitchen, or dining room with no worries about water ingress. In addition, you can install this TV directly above the fireplace, it has metal casing and optimized heat dissipation design.

Mirror TVs are also often installed in pools, beauty salons, hotel lobbies and many other commercial premises for the purpose of broadcasting entertainment and advertising materials.



# STANDARD SIZE TVS



## Waterproof TV structure

Built-in TV is protected from water according to the IPx4 standard; it can be used in wet areas such as bathroom, pool, jacuzzi, etc.



## Easy to wash

The TV does not require special care; it can be washed like a regular mirror.



## Waterproof remote control

The remote control can be used with wet hands and washed under the tap.



## Full HD/ 4K IPS LED

The screen provides wide viewing angles, and you can enjoy a high-resolution image.



## Integrated vibration speakers

Vibration speakers reproduce high-quality sound through the glass, while there are no holes on the front surface.



## TV system

The TV is equipped with built-in digital and analogue tuners, and you can also watch videos from a USB flash drive or HDD.



## Smart TV

Some AVEL TVs are already equipped with a Smart TV system, for other models you can connect an Android set-top box.



## 2 years warranty

We provide a two-year warranty for each AVEL TV.



## EASY AND RELIABLE INSTALLATION



AVEL TVs are built into a pre-arranged recess in the wall using a special installation box included in the package. All elements of the construction are firmly fixed and securely hold the TVs of the largest diagonals.

All the wires and Smart set-top box, if it was connected to the TV, are hidden in a niche and invisible to prying eyes. The connection point of the wires on the TV case is additionally protected from moisture.

## COLOR OPTIONS

---



Mirror



Black



White

---

## ADVANTAGES

- 2 internal vibration speakers (20W for 43-75 inch models, 10W for 24-32 inch models)
- Moisture protection - Full IPx4
- Smart TV: built-in or connected set-top box
- Ports and connectors: HDMIx2, USBx2, TVx2 (analogue and DVB-T2), Composite, CI+, IR control (to manage external devices)
- IR connector for connecting an IR receiver or integrating with other devices
- Built-in media player
- Analogue and digital TV tuners
- Waterproof remote control



# SPECIFICATIONS AND DIMENSIONS

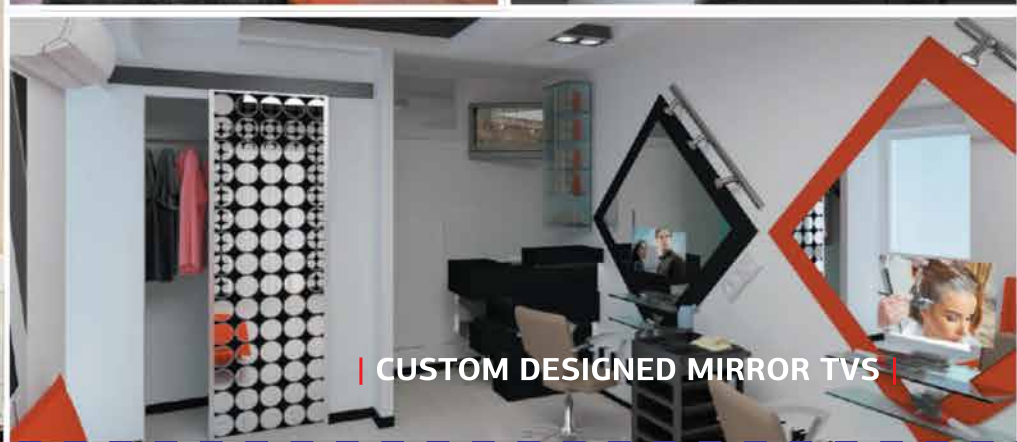
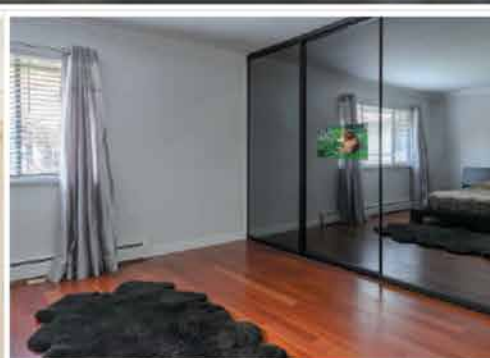
You will definitely find the right TV for your project. Depending on the size of the room, you can choose a screen diagonal from 24 to 75 inches.

MODEL	DIMENSIONS	SPECIFICATIONS
<b>AVS240SM</b>		<b>Screen resolution:</b> 1920x1080 (2K) <b>Brightness:</b> 700cd/m <sup>2</sup> <b>Installation dimensions:</b> 631x445x66mm
<b>AVS430SM</b>		<b>Screen resolution:</b> 3840x2160 (4K) <b>Brightness:</b> 800cd/m <sup>2</sup> <b>Installation dimensions:</b> 1049x732x73mm
<b>AVS550SM</b>		<b>Screen resolution:</b> 3840x2160 (4K) <b>Brightness:</b> 800cd/m <sup>2</sup> <b>Installation dimensions:</b> 1309x868x81mm
<b>AVS650SM</b>		<b>Screen resolution:</b> 3840x2160 (4K) <b>Brightness:</b> 800cd/m <sup>2</sup> <b>Installation dimensions:</b> 1540x992x83mm
<b>AVS750SM</b>		<b>Screen resolution:</b> 3840x2160 (4K) <b>Brightness:</b> 400cd/m <sup>2</sup> <b>Installation dimensions:</b> 1773x1127x83mm

# CUSTOM DESIGNED MIRROR TVS

If you have a creative project and want to transform your interior with unusual mirror elements, choose a mirror TV with an individual design. We will help you realize all your ideas and make a TV in a specific size and shape, just for you.

This option also gives a unique opportunity for business owners who will receive a modern and non-standard tool for displaying information and entertainment videos.





MODEL	DIMENSIONS	SPECIFICATIONS
<b>AVS220OF</b>		<b>Screen resolution:</b> 1920x1080 (2K) <b>Brightness:</b> 1000cd/m <sup>2</sup> <b>Installation dimensions:</b> 596x596x31mm
<b>AVS270OF</b>		<b>Screen resolution:</b> 1920x1080 (2K) <b>Brightness:</b> 1000cd/m <sup>2</sup> <b>Installation dimensions:</b> 700x483x66mm

## ANY SHAPE OF YOUR MIRROR



Feel free to choose your mirror TV! We will follow your wishes, and the bespoke mirror glass TV will take on an exclusive shape. You can create a memorable interior that reflects your personality.

## ANY MIRROR SIZE

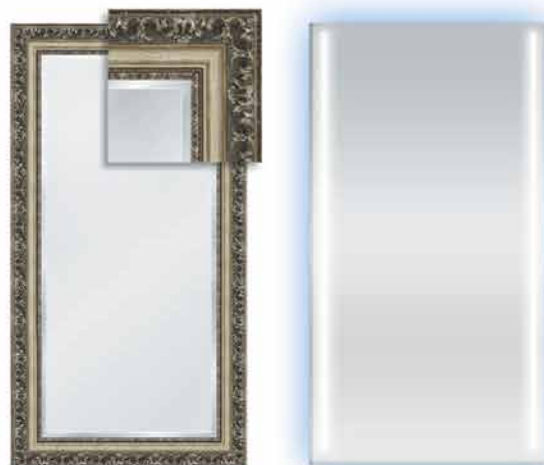
Now we are ready to produce for you Mirror TVs with screen sizes from 24 to 75 inches. Such a wide range of sizes helps to meet all the requirements and create a unique product that will delight you for many years.



Wherever you plan to place a custom framed mirror TV (in a cozy bedroom, a spacious living room or in commercial premises for advertising), you can select the screen size that will be optimal for your case.



## FRAMED DESIGN AND LED BACKLIGHT



### REGULAR BRIGHT SCREEN

**250 - 500 cd/m<sup>2</sup>**

(depending on the screen diagonal)

This type of screen is perfect for TVs with a light mirror (Silver) and for rooms without panoramic windows (large windows opposite the TV). The brightness will be enough to comfortably watch movies and programs from anywhere in the room.



### SUPER BRIGHT SCREEN

**800 - 1000 cd/m<sup>2</sup>**

(depending on the screen diagonal)

A super bright screen is necessary if you plan to install TV in front of windows, in rooms with panoramic windows, on a veranda or terrace with direct access to bright sunlight. When ordering a frameless TV with a dark mirror (Graphite), choose a super bright screen too. This will provide a better image with typical transmission and reflection parameters for this mirror type.







[www.avelinnovations.com.au](http://www.avelinnovations.com.au)

**Australian Distributor**

49 Trade Place, Coburg North  
Victoria Australia 3058

Phone: 03 9354 3219

Mobile: 0423 494 545

Email: [info@avelinnovations.com.au](mailto:info@avelinnovations.com.au)